

Special
Novelties



Huya
TRENDS
PROFESSIONAL LINE

TREAT LASHES

thuya
PROFESSIONAL LINE

TREATMENT FOR
EYELASH GROWTH
WITH COLOR



thuya
PROFESSIONAL LINE

TRENDS

A Editorial

lways with new products ready for you. A new season we bring you the most important trends for nails, eyebrows and eyelashes and hands and feet.

New colours of permanent nail polish On Off with more than 195 colours in a collection manufactured in our own laboratory and with the maximum quality guarantee.

New nail sculpting techniques, building nails has never been so easy and fast, become a virtuoso with our Soft Gel and Acrylic gel.

Finally, the best treatments for the eyes with a new lifting glue and our incredible vegan line. Plus, you'll find thousands of gift ideas for the holidays to pamper your customers.

EDITORIAL	2
NEW GEL ON-OFF	3
GEL ON-OFF DISPLAYS	5
NEW SOFT GEL	7
NEW DUAL SYSTEM	9
NEW EYELASH LIFTING GLUE	11
TAKE CARE OF YOUR LOOK	13
VEGAN LINE	15
MERRY CHRISTMAS	17



THIS SEASON, WE'RE EMBRACING COLOURS INSPIRED BY NATURE. THREE GREENS THAT BLEND WITH FLORAL TONES AND A PASSIONATE RED PAR EXCELLENCE.

DISCOVER THE FOUR NEW AUTUMNAL ON-OFF GEL PERMANENT NAIL POLISH COLOURS TO MIX AND MATCH AS YOU LIKE AMONG THE MORE THAN 190 AVAILABLE SHADES:

GEL ON-OFF ORGANIC

A refreshing and revitalized shade that emulates natural, organic, eco-friendly green for nature enthusiasts.

7 ml ref. 011610687
14 ml ref. 011610686



GEL ON-OFF EUCALYPTUS

It's a revitalizing green shade reminiscent of eucalyptus leaves, with that ideal menthol touch for timeless manicures.

7 ml ref. 011610691
14 ml ref. 011610690



GEL ON-OFF LOVE

This on-off gel is a quintessential passionate and earthy red, an essential shade for this season.

7 ml ref. 011610693
14 ml ref. 011610692



GEL ON-OFF GREEN SHADOW

It's a permanent nail polish in a deep green tone with a hint of gray, perfectly combinable with the most autumnal and wintery hues.

7 ml ref. 011610689
14 ml ref. 011610688



the FLOWERS



Contiene:

Gel On Off Love 14 ml (NEW)
Gel On Off Milky Cream 14 ml (NEW)
Gel On Off Red Rome 14 ml
Gel On Off Elegant 14 ml
Gel On Off Cereza 14 ml
Gel On Off Romance 14 ml



Expositor The Flowers
ref. 011610694

Contiene:

Gel On Off Green Shadow 14 ml (NEW)
Gel On Off Eucalyptus 14 ml (NEW)
Gel On Off Organic 14 ml (NEW)
Gel On Off Chocolate 14 ml
Gel On Off Autumn 14 ml
Gel On Off Black Green 14 ml

the JUNGLE



Expositor The Jungle
ref. 011610695



MEDIUM COFFIN & MEDIUM STILETTO

The fastest and most professional nail extensions

- Flexible gel tips perfect for precise application.
- Break resistance from the arch to the free edge.
- Soft flexi-fit gel for a perfect seal.
- Thin, snag-free cuticle contact area.

SOFT GEL or also known as X-gel, is a technique in which flexible tips made of gel are used which are adhered directly onto the entire surface of the nail plate with the Soak off gel. These tips dry in a lamp and allow you to focus on NAIL ART rather than sculpting. **It is ideal for light, thin and flexible nails.** A fast service for those clients who want a nail extension in a few minutes.



Our **soft gel** tips are very comfortable to wear as they hardly increase the thickness of the nail. Another advantage is that they are easy to remove.

They are available in two shapes for different nail finishes:
Medium Coffin and Medium Stiletto.

INSTANTLY LONGER NAILS.



SOFT GEL TIPS STILETTO MEDIUM Ref. 11208237
SOFT GEL TIPS COFFIN MEDIUM Ref. 11208238

SOAK-OFF GEL

STRENGTHENS AND REBUILDS THE NATURAL NAIL

The perfect partner for manicure and pedicure services, **HARDENS, REPAIRS and CORRECTS** flaws and imperfections.

A strong gel to reinforce or reconstruct the natural nail, without the need to use sculpting materials.

- ✓ NAIL STRENGTHENING
- ✓ LENGTHENING
- ✓ RUSSIAN VOLUME
- ✓ LEVELLING AND ALIGNMENT



COFFIN
&
SQUARE

IT IS IDEAL FOR ACHIEVING
LIGHT, THIN AND FLEXIBLE NAILS.



- Ideal for.....
 - **Professionals** who want to offer a new, quick, easy and salon-finish service.
 - **Clients who want a one-off nail sculpting:** para for a party, a holiday, an event...
- **Special moulds also called capsules** are used.
- It helps to achieve different nail sculpting shapes.

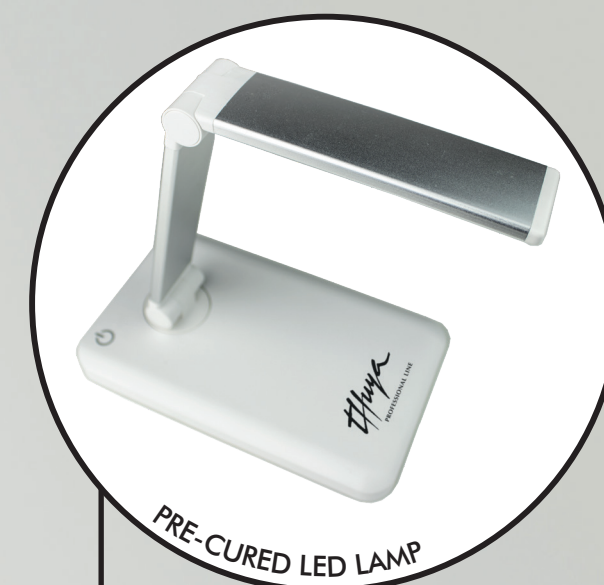


DUAL SYSTEM, a quick and easy nail sculpting system with an incredible finish.

A technique with less application time and a shorter and faster filing.

It is perfect for professionals who want to offer a faster service, saving time, filing and product. Getting more flexible and resistant nails. With the **DUAL SYSTEM** moulds you will get beautiful, thin and resistant nails.

Thuya **ACRYLIC GEL** will be the perfect ally to achieve a nail extension with a perfect design.



for Soft Gel and Dual System tips. It will allow the pre-curing of the gels during the application of Soft Gel and/or Dual System tips and rhinestones for a better result.
Ref. 011305410

**ACRYLIC
GEL**

SAFE
No monomers,
no dust in the air.

**STRONG &
RESISTANT**
Acrylic gel is resistant, hard and strong, for unstoppable nails.

IDEAL
For all types of
professionals. With total freedom
of time to work. Light and
resistant nails.

COMFORTABLE
Easy to handle, does not spread,
quick and easy application.



DUAL SYSTEM COFFIN Ref. 11208239
DUAL SYSTEM SQUARE Ref. 11208240

EYELASH LIFTING GLUE

NO LATEX



NEW EYELASH LIFTING GLUE

A NEW FORMULA THAT COMBINES DIFFERENT COSMETIC POLYMERS CREATING A PERFECT ADHESION TO BOTH THE SKIN AND THE SILICONE PADS THANKS TO THE EXCELLENT FORMATION OF THE ADHESIVE FILM.

A NEW FORMAT FOR IMPROVED APPLICATION, WITH A BRUSH FOR PERFECT DISTRIBUTION.

5 ml ref. 011150012



ITS FIXING POWER ALLOWS THE EYELASH LIFTING SERVICE TO BE CARRIED OUT IN THE BEST CONDITIONS, FACILITATING THE SERVICE TO THE PROFESSIONAL.

IT IS EASY TO REMOVE WITH WATER AND LEAVES NO RESIDUE.

Getting the perfect look has never been so **EASY**.

Show off eyelashes with the most natural treatment.

Take care of your look

EYE CARE CONCENTRATE is a highly concentrated serum for the CARE and ANTI-AGEING of the eye area that reduces and prevents the appearance of bags, dark circles and wrinkles around the eyes.

Eye Care ref. 011150048



The **COLOR & SHAPE FIXER** is a serum to fix the shape and colour of the eyebrow dye. Its application allows us to fix the desired shape and enhance eyebrow treatments by extending their durability.

Thanks to its main active ingredients such as Jojoba, Aloe vera and Panthenol, it improves colour retention, increasing the duration of the dyeing service, provides HYDRATION and EMOLLIENCY.

Color & Shape Fixer ref. 011150085



Thuya **BOOSTER GEL** is an incredible serum developed to give intensity to the eyes and make lashes LONGER, MORE EXTREME and VOLUMINOUS.

The Booster Gel is ideal for use on sparse eyebrows and sparse, weak or short eyelashes.

Booster Gel ref. 011610337



THE EYES ARE THE MOST EXPRESSIVE PART OF THE FACE, SO TO ENHANCE OUR EYES WE MUST TAKE CARE OF THEM AND BEAUTIFY THEM WITH THE BEST TREATMENTS.



TREAT LASHES is a mascara with a dual function: on the one hand, it contains active ingredients that promote eyelash GROWTH, making them look longer, denser and stronger. On the other hand, it adds COLOUR with a make-up effect. In addition, it has a special infinity-shaped brush to provide more volume and catch every last lash.

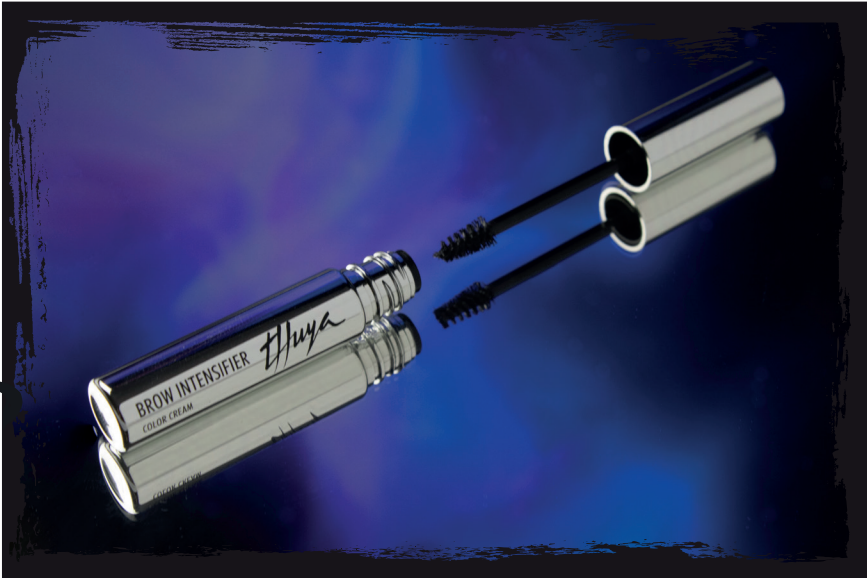
Treat Lashes ref. 011150100

The **BROW INTENSIFIER** is a treatment specially designed to give body and definition to eyebrows. It reactivates hair growth giving more volume and density to the eyebrows. It combs, fills and sculpts quickly and effectively.

Contains Curcuma Longa to prevent hair loss, stimulate growth and achieve hair redensification.

is available in three colours: SOFT for lighter eyebrows and hairs; MEDIUM, a very subtle medium brown for lighter eyebrows and DARK, a dark brown for darker eyebrows.

Brow Intensifier Soft ref. 011150044
Brow Intensifier Medium ref. 011150027
Brow Intensifier Dark ref. 011150014



The **STRENGTHENING BASE** activates the natural growth of the eyelashes, optimising the beauty of the eyes.

The combination of its two main active ingredients, Biotinyl-GHK (Vitamin H) and Panthenol (Vitamin B5), acts on the eyelash follicles favouring hair growth, both in length and diameter. It is an anti-fall treatment that strengthens eyelashes and gives them more volume.

Strengthening Base ref. 011102056

VEGAN *line*

Vegan innovations in eyebrow and eyelash treatments

The new vegan line offers a complete service ranging from tinting, lifting, perming and eyebrow laminating services.

- VEGAN CREAM NEUTRALIZER.

The complete efficacy of our neutralizer without any animal ingredients.

Ref. 011150104

- VEGAN PERMANENT GEL.

The permanent gel has been reformulated by eliminating the ingredient of animal origin and maintaining its function and effectiveness, thus achieving a product of the same quality and effectiveness but completely vegan.

Ref. 011101074

WE ARE LAUNCHING A NEW COMPLETELY VEGAN LINE TO BE ABLE TO OFFER ALL OUR EYE TREATMENTS AND SERVICES WITHOUT ANY INGREDIENTS OF ANIMAL ORIGIN.

We are launching **4 COLOURS** of 100 x 100 Vegan dyes, maintaining the same properties as our current range of dyes. Maintaining its **dual function of colour and treatment in a single application.**

In addition, **Argan Oil**, which penetrates the pores of the hair improving its elasticity and flexibility, **Mullein Flowers**, a vegan active ingredient that has the ability to absorb ultraviolet radiation and emit visible light, which translates into illumination and **Aloe Vera** which provides amino acids, vitamins and minerals for a healthier, shinier and more conditioned eyelash..

We are also launching a new completely vegan **REGENERATING CREAM.**

To offer the treatment from start to finish from the salon to maintenance at home.

In addition to beautifying our eyes it is important to treat and maintain the result of our treatment with the best cosmetics.

Ref. 011150101



Dermatologically and
ophthalmologically tested.



Box with two Beauty System ampoules, perfect for your clients to take care of themselves.
ref. 011208259



Gift box for a perfect look.
Contains:
- Curcuma Make-up Remover 100 ml
- Brow intensifier Medium
- Treat Lashes Mascara
- GIFT
ref. 011106035



Get amazing manicures with the best selection of coloured porcelains for the Christmas holidays.
ref. 011502096



Fragrance Gift Boxes ideal for gifts, take care of your hands and fill your home with a pleasant perfume.
Contains:
- Hands Cream 75 ml
- Nails Oil
- Mikado fragrance.
BLOSSOM ref. 012000413
CLOUD ref. 011208258
COTTON ref. 011208257
DREAM ref. 011208256



Matte or shine and the best effects to combine with amazing shades of On-Off Gel.
Contains:
- Purple rain effects
- Moonlight effects
- Sea Shell effects
- Ultraviolet on-off 14 ml
- Clover on-off 14 ml
- Electric Blue on-off 14 ml
- Top Coat Matte 14 ml
ref. 011208254

thuya

PROFESSIONAL LINE

DELUXE

Don't miss our
collection!

- ✓ Premium enamel of the highest quality.
- ✓ More than 95 colours to choose from.
- ✓ Great coverage.
- ✓ Incredible texture.
- ✓ Easy application thanks to the special brush.



Always perfect, always Deluxe.